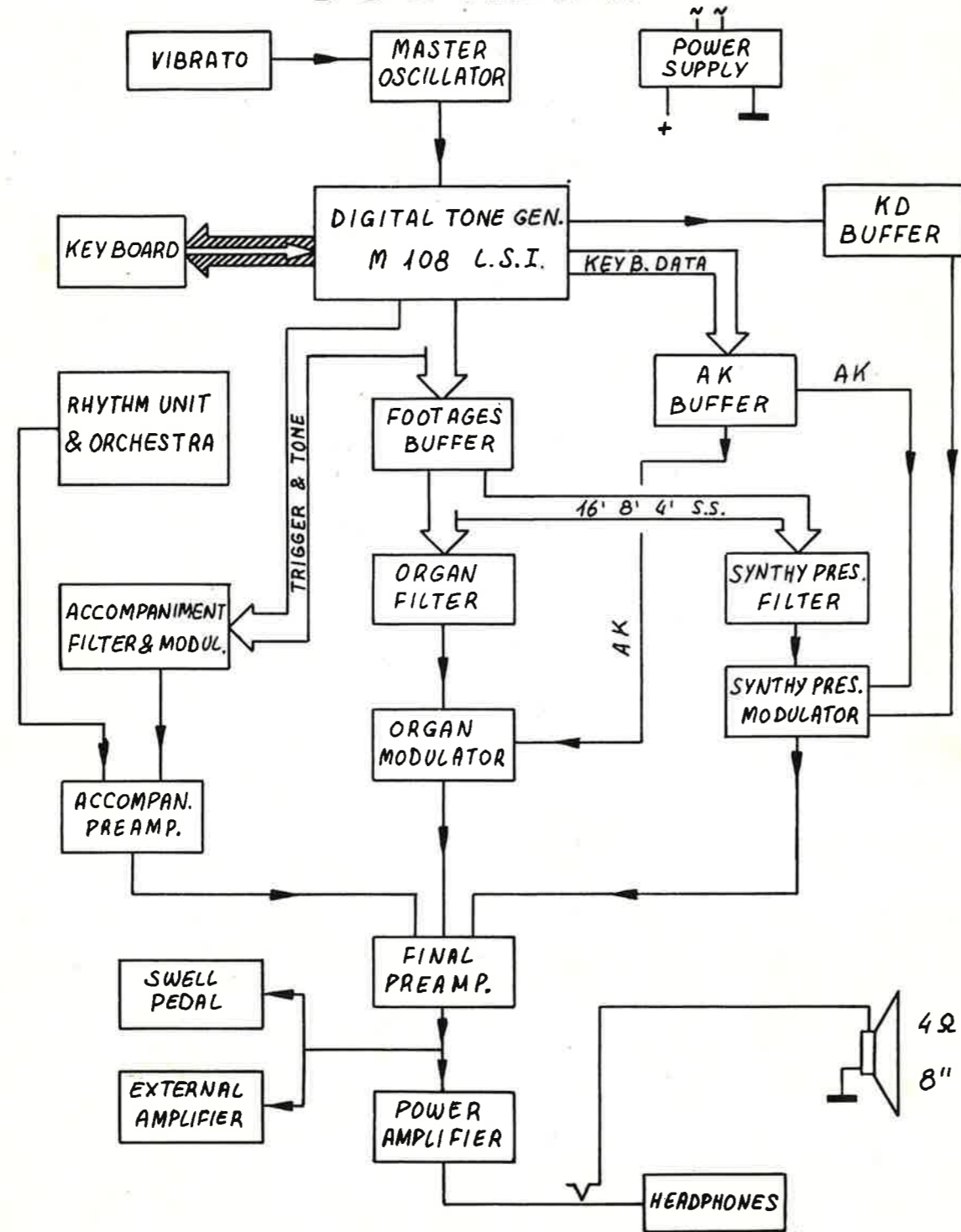


BLOCK DIAGRAM



**SCHEMATIC DIAGRAMS
MOD.**

Sprinter 49 B

ELECTRONIC ORGAN

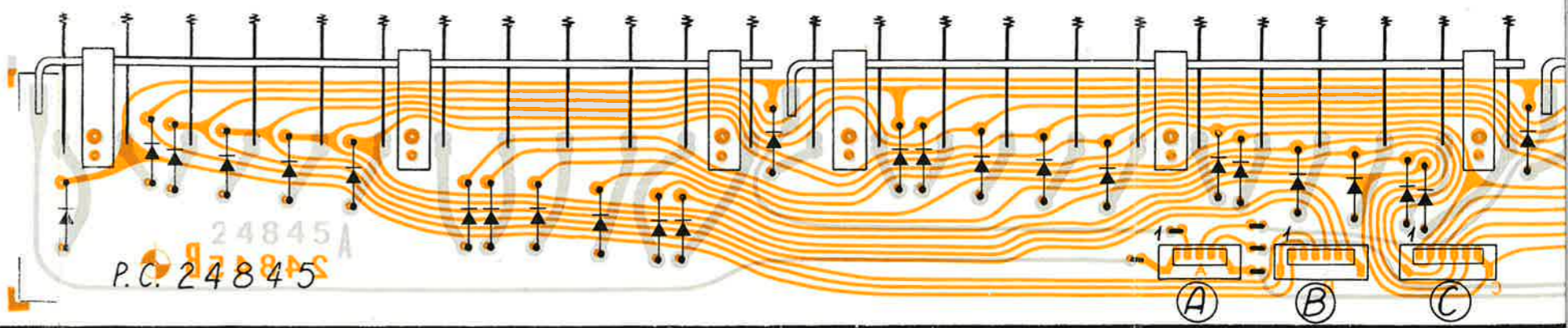
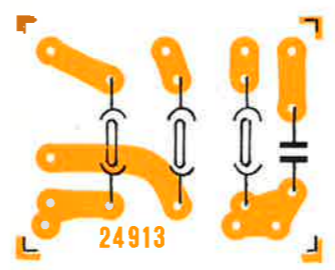
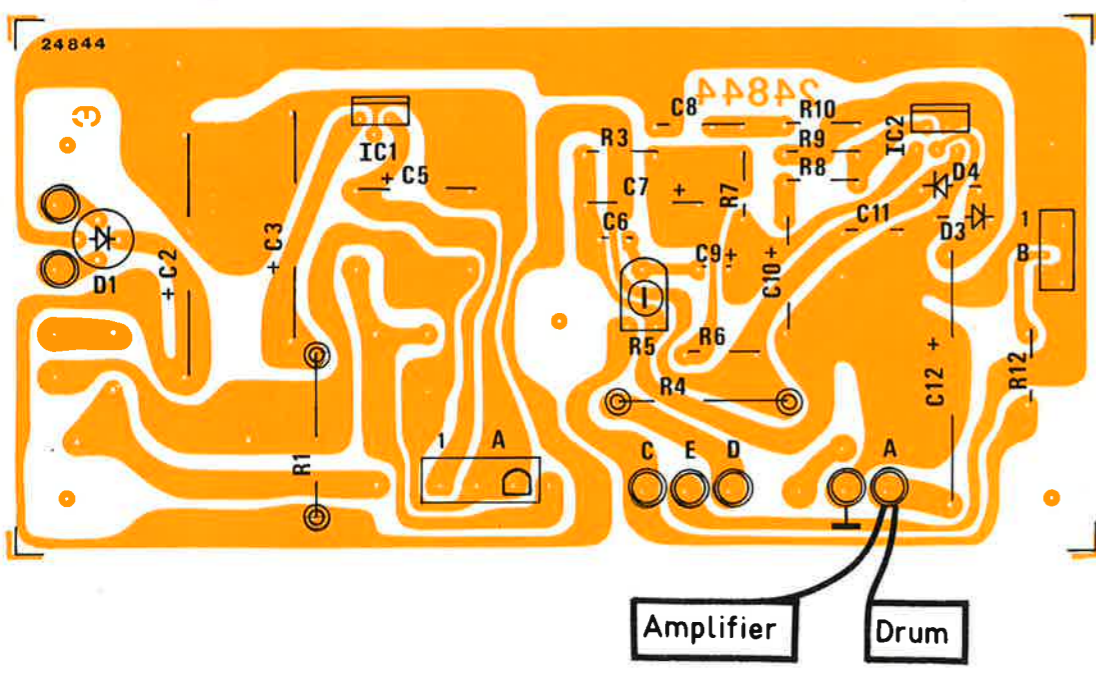
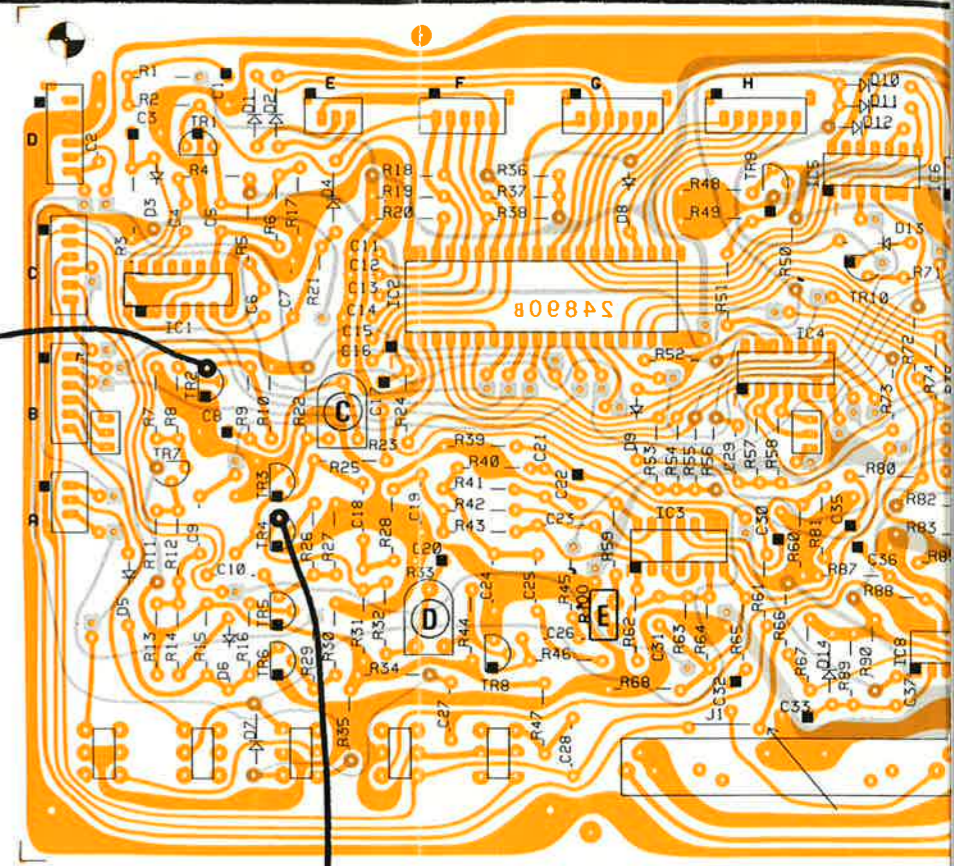
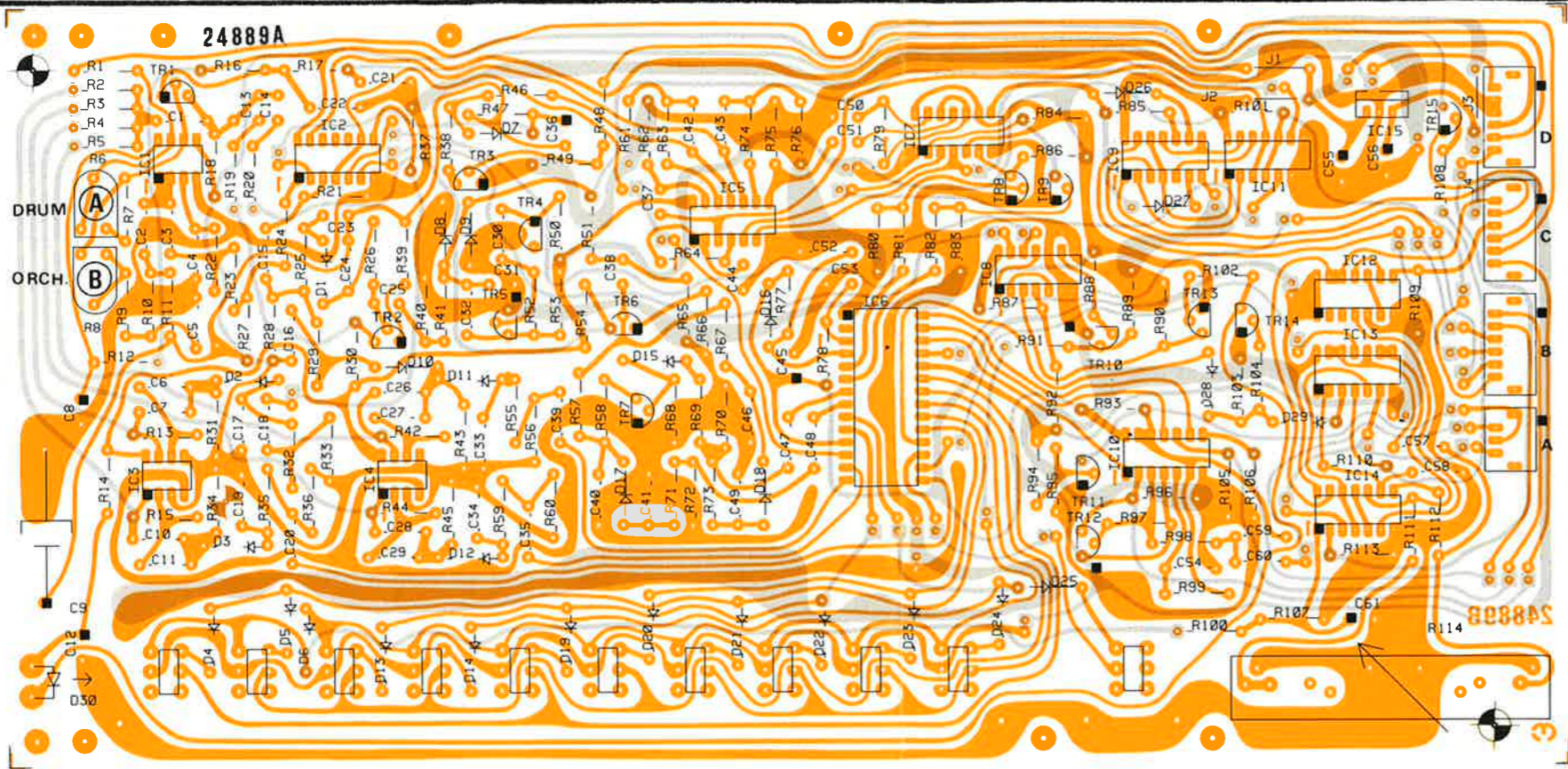
orgue

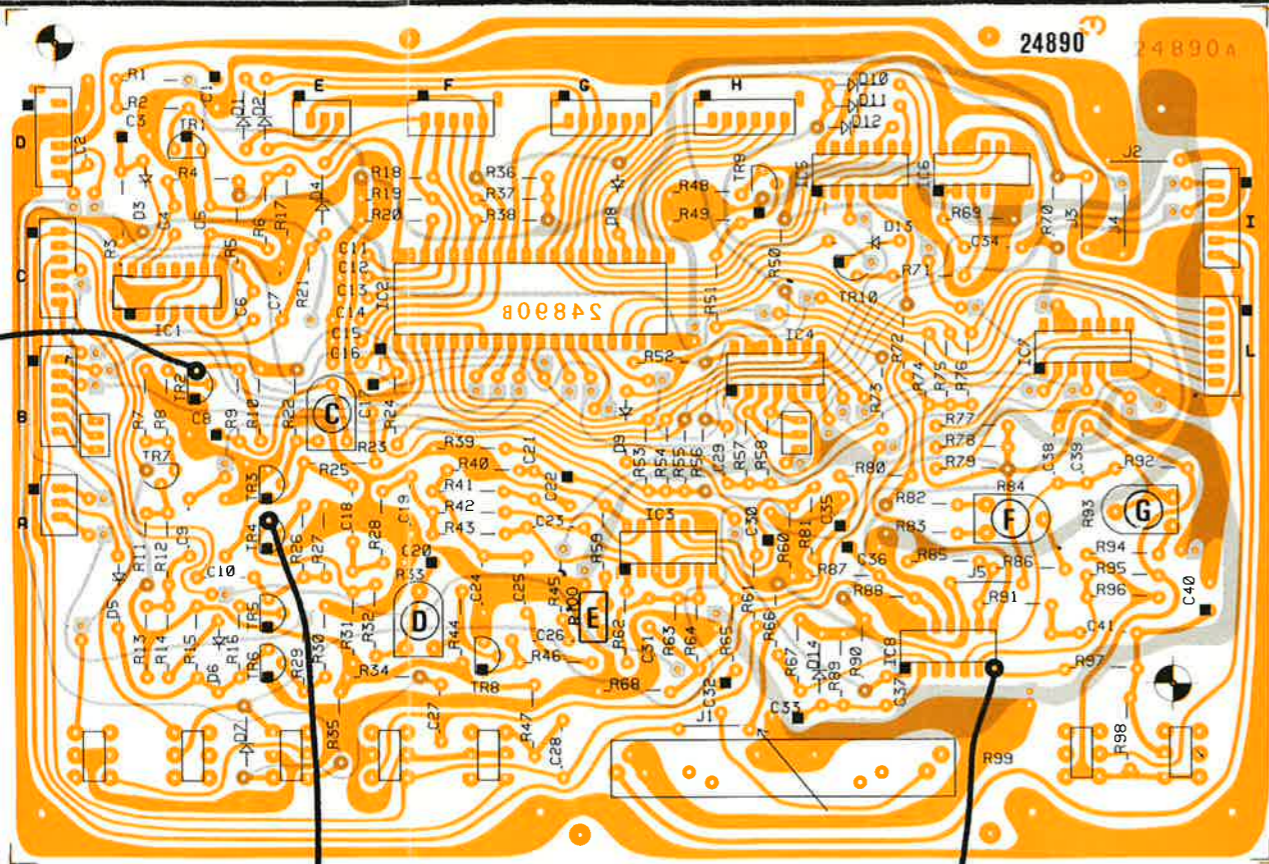
GEM® A PRODUCT OF

**general
electro
music**

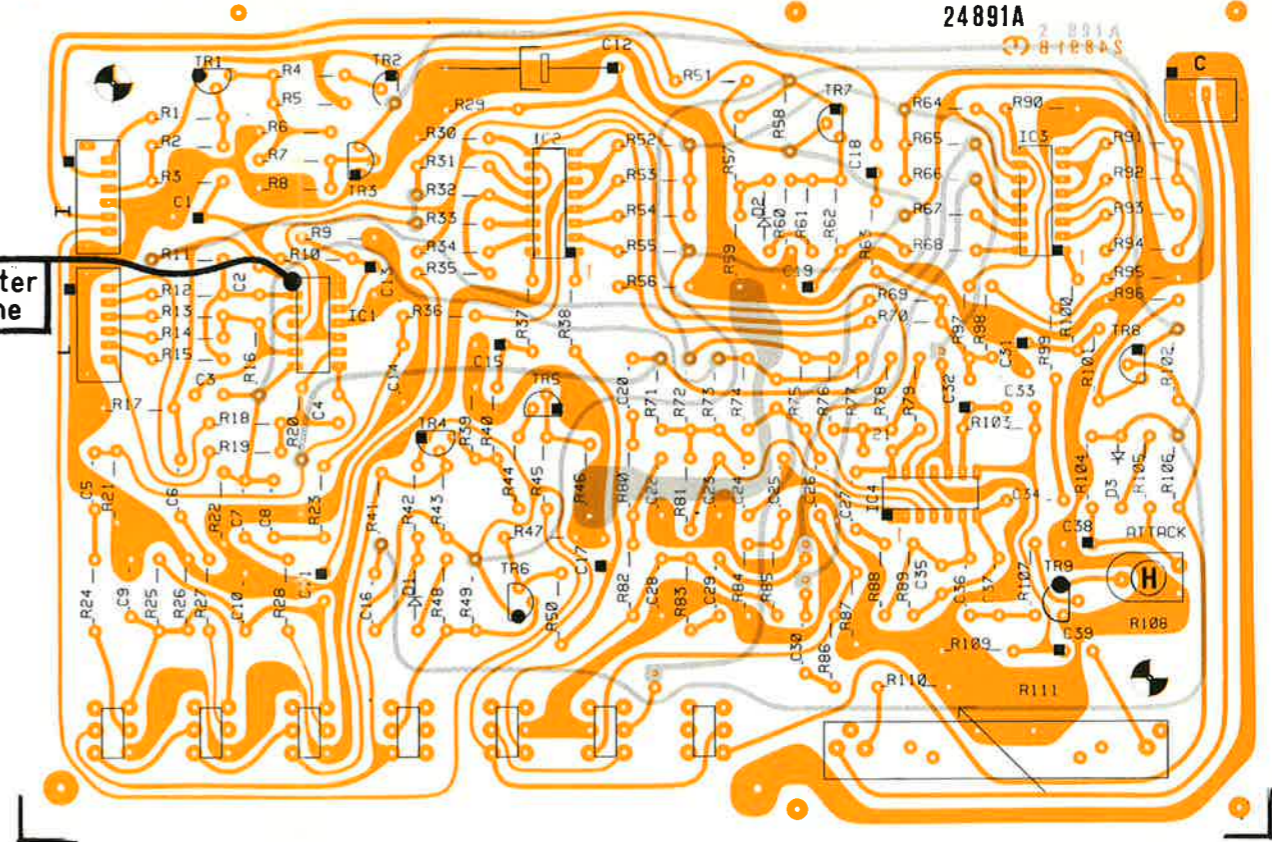
COD. 27322

MONDAINO · FO · ITALY



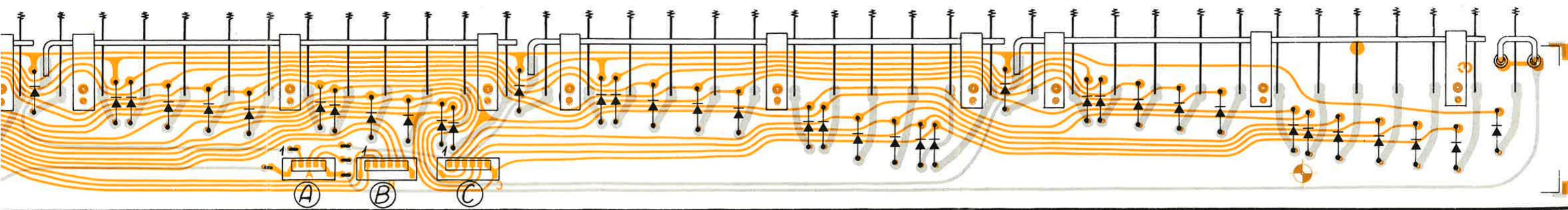


Master Tune



Chord Decay

Vibrato

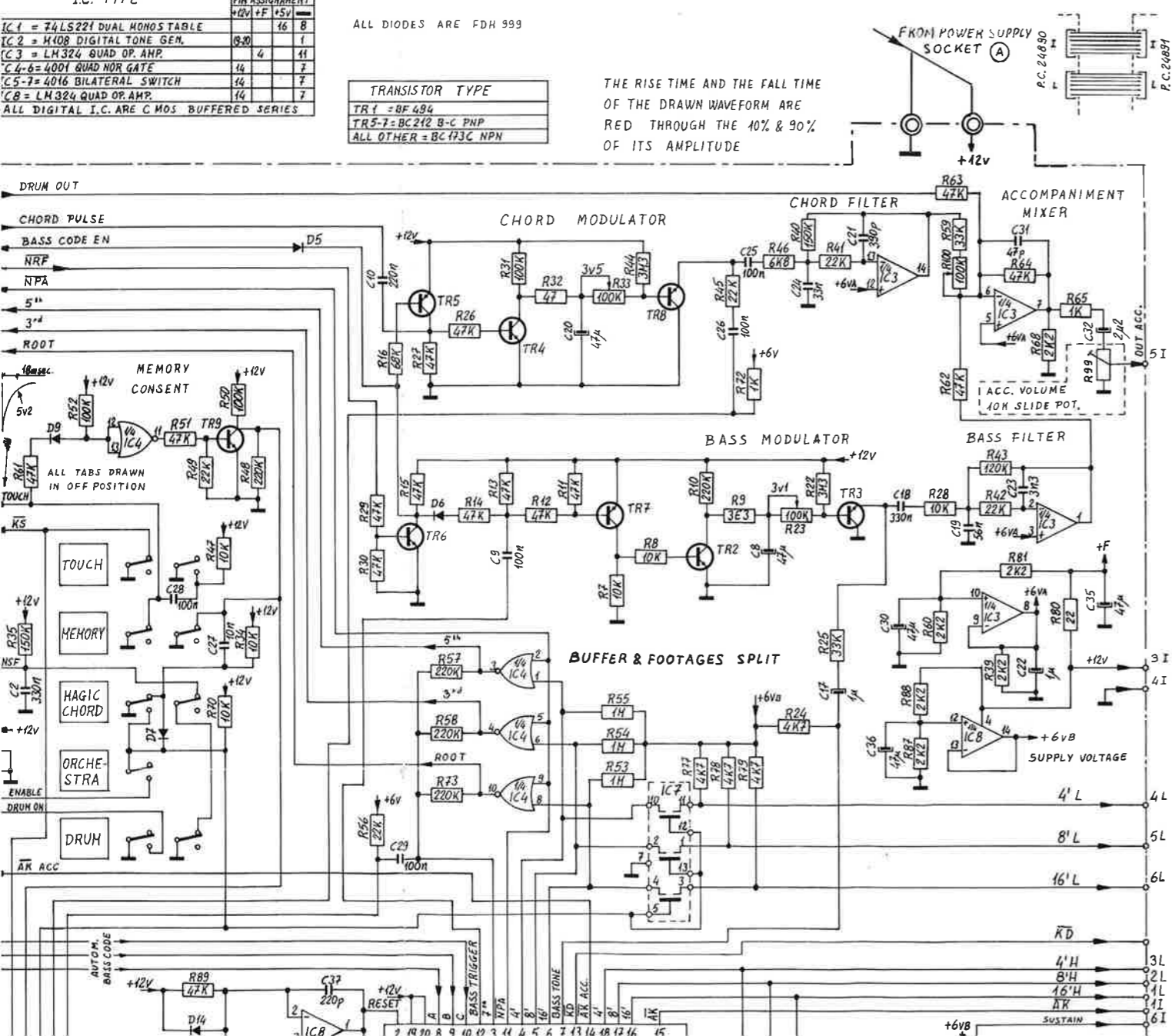


I.C. TYPE	SUPPLY VOLTAGE	PIN ASSIGNMENT
IC1 = 74LS221 DUAL MONOSTABLE	+12V +F +5V	16 8
IC2 = 4108 DIGITAL TONE GEN.		8 20 1
IC3 = LM324 QUAD OP. AMP.		4 11 41
IC4-6 = 4001 QUAD NOR GATE		14 7 7
IC5-7 = 4016 BILATERAL SWITCH		14 7 7
IC8 = LM324 QUAD OP. AMP.		14 7 7
ALL DIGITAL I.C. ARE CMOS BUFFERED SERIES		

ALL DIODES ARE FDH 999

TRANSISTOR TYPE
TR1 = BF494
TR5-7 = BC212 B-C PNP
ALL OTHER = BC173C NPN

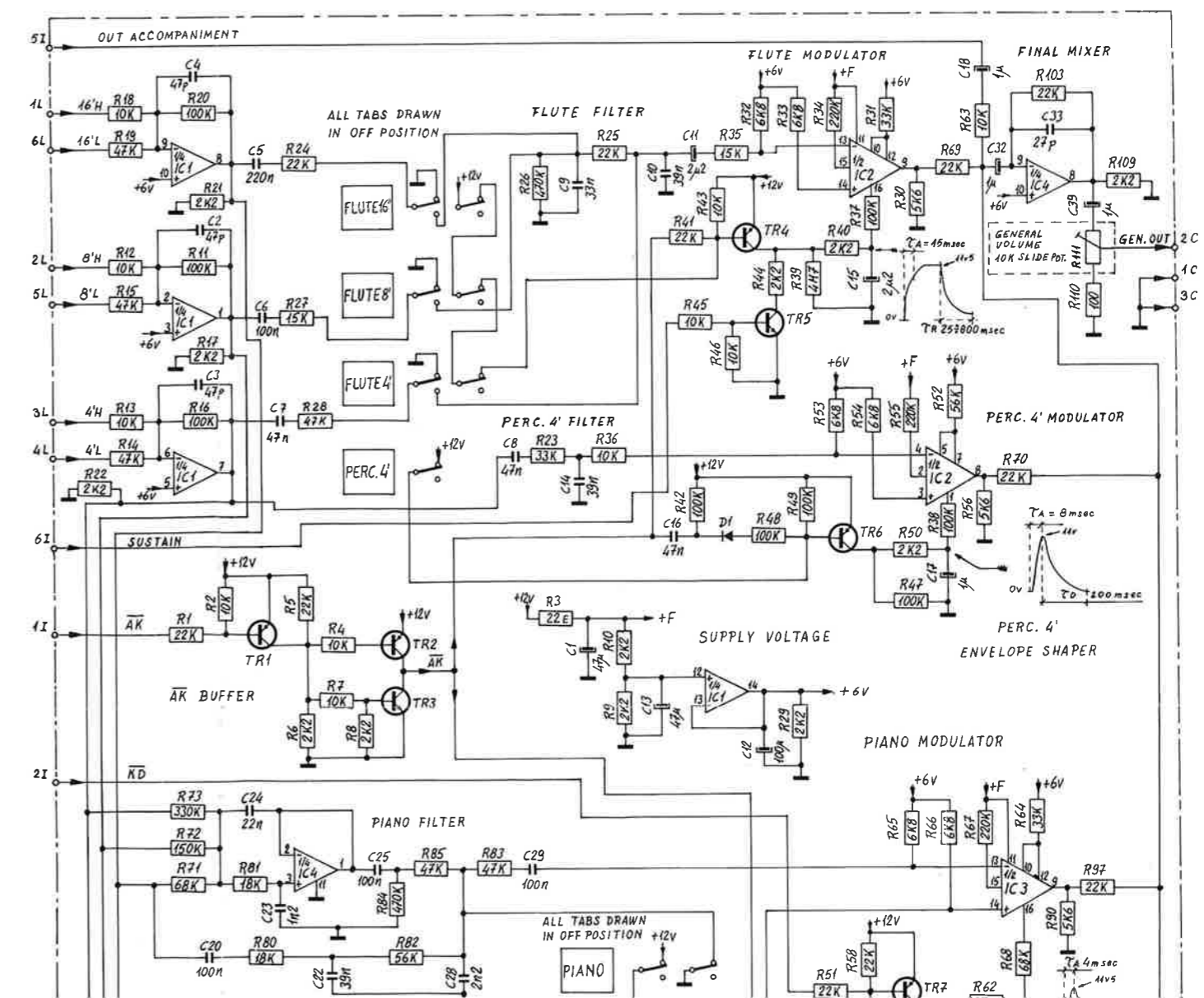
THE RISE TIME AND THE FALL TIME OF THE DRAWN WAVEFORM ARE RED THROUGH THE 10% & 90% OF ITS AMPLITUDE

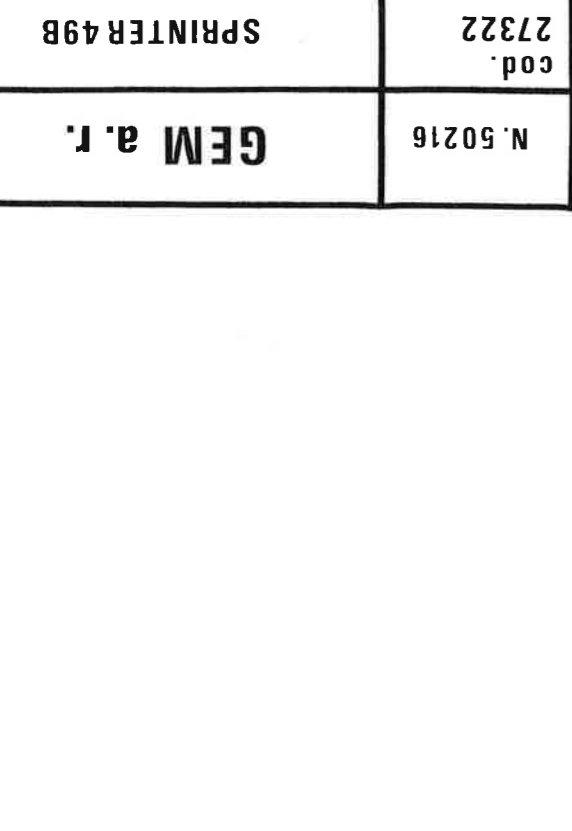
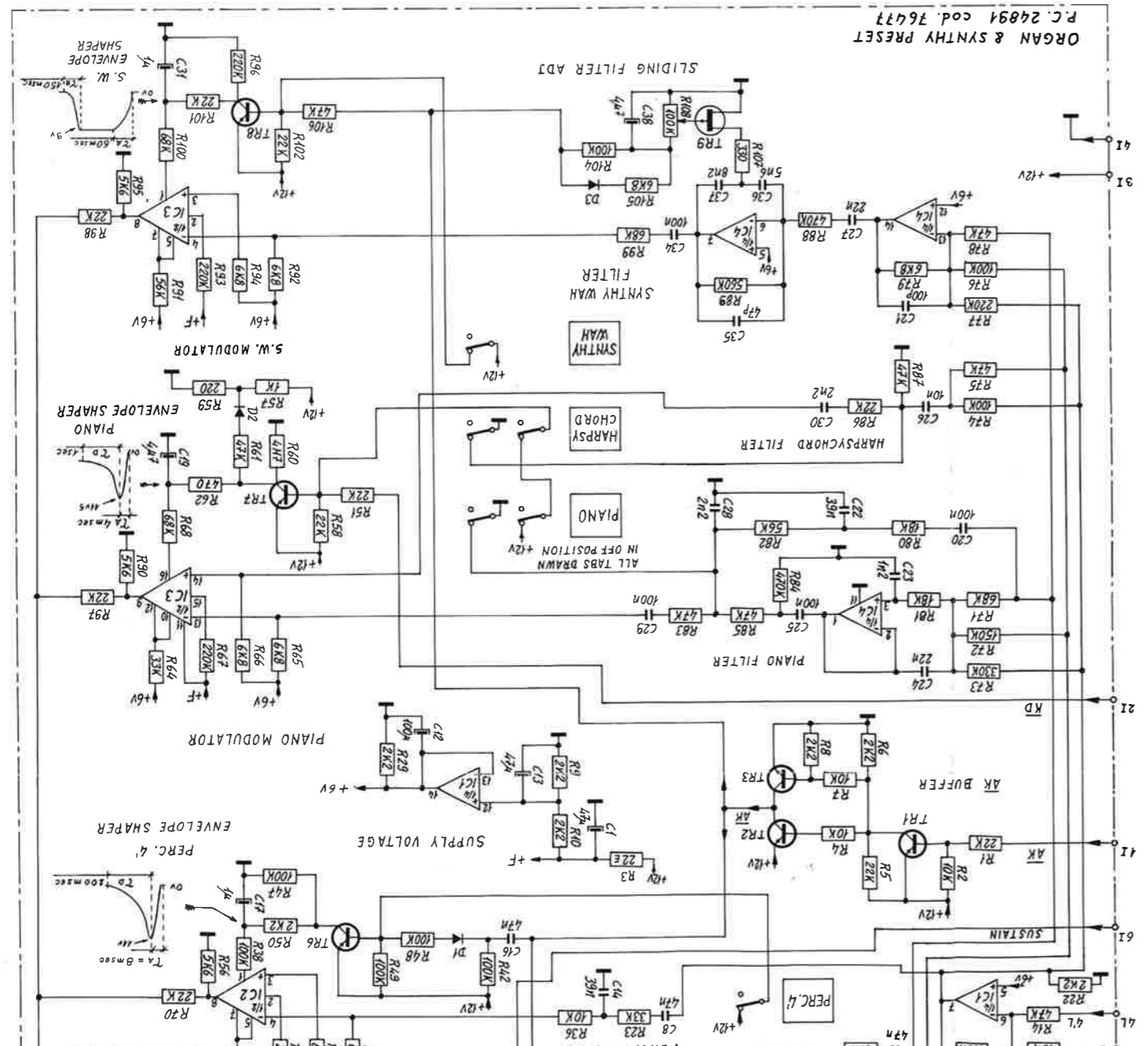
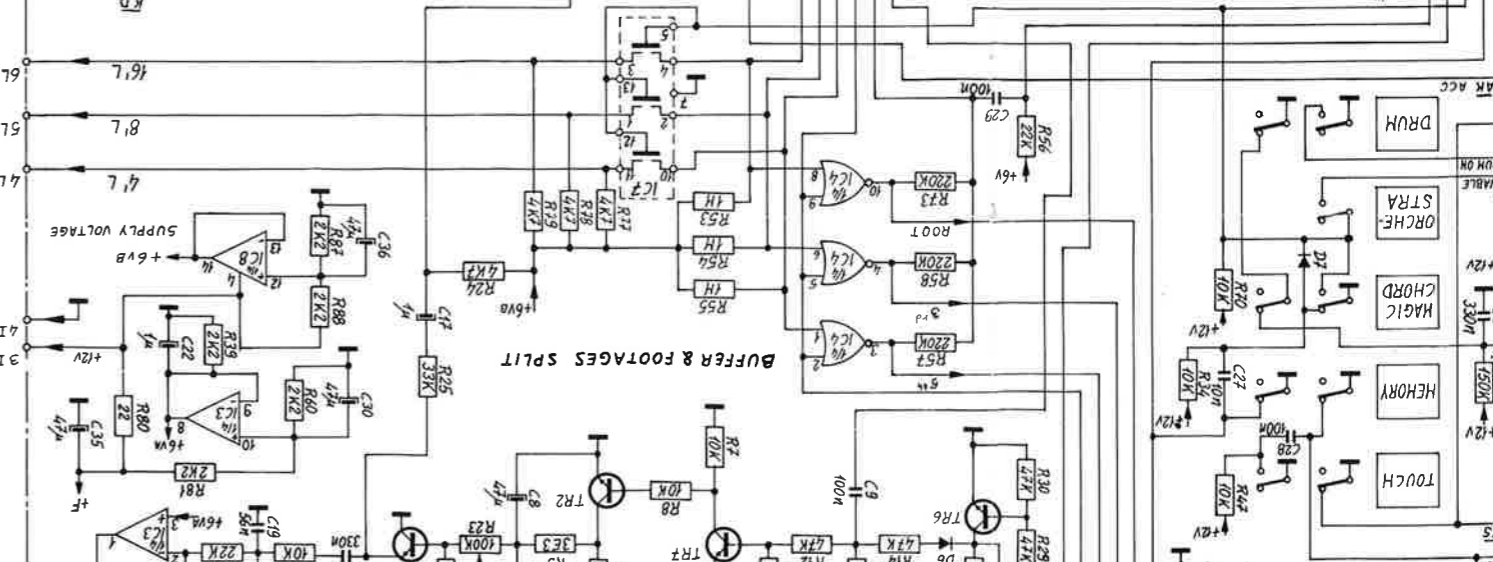
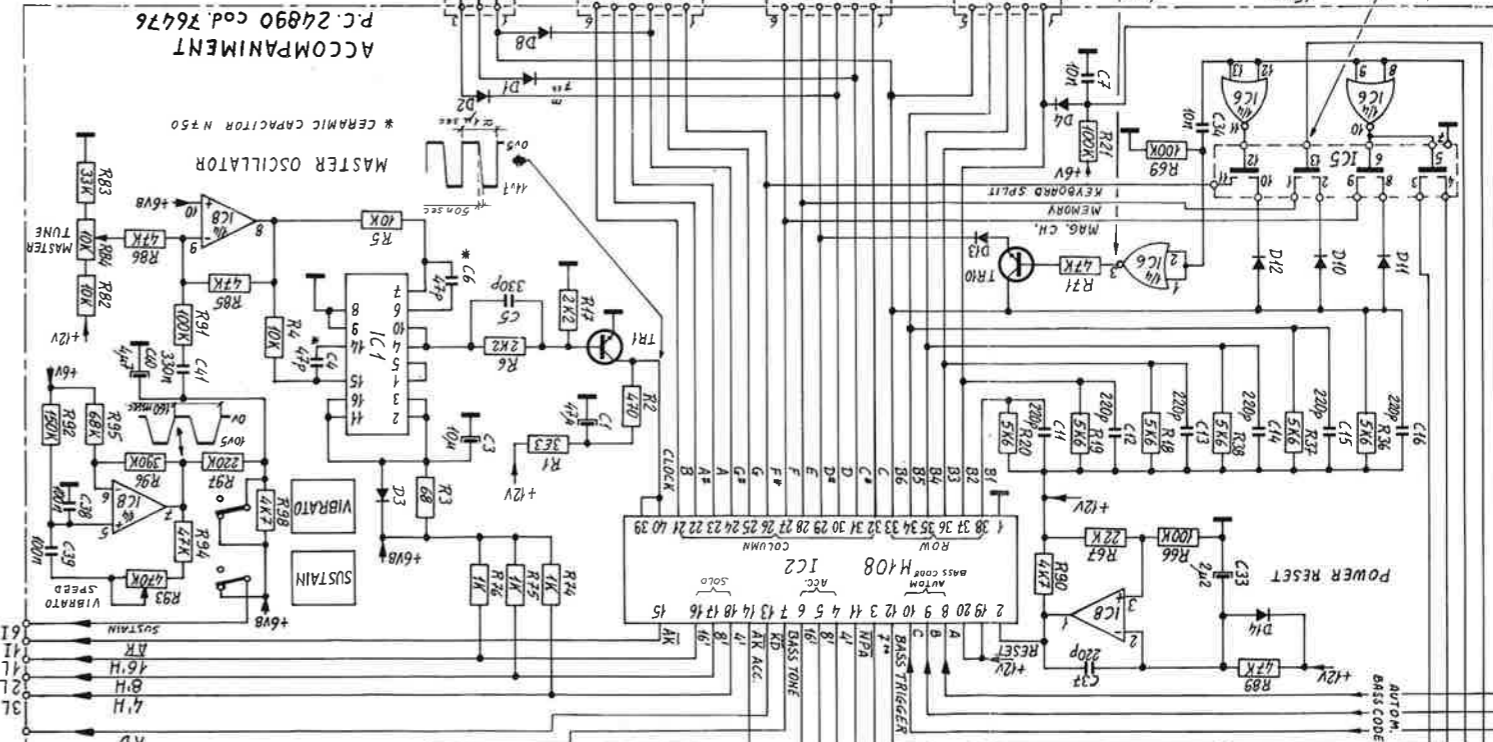
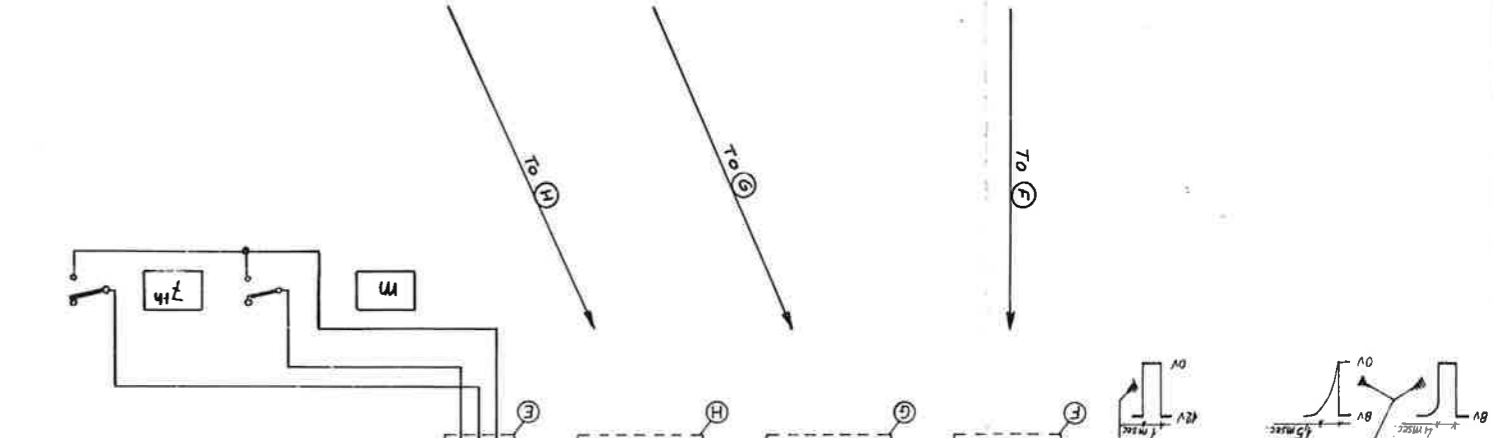
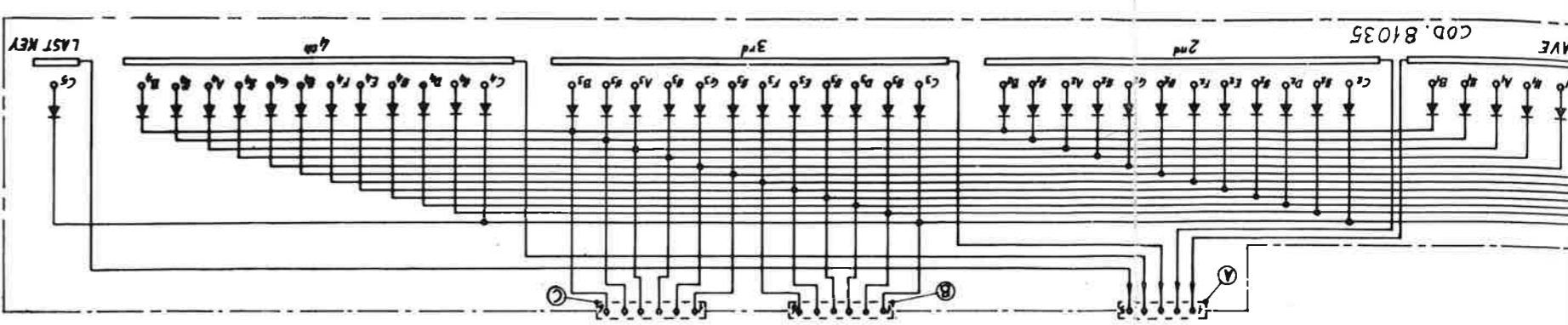


I.C. TYPE	SUPPLY VOLTAGE	PIN ASSIGNMENT
IC4-6 = LM324 QUAD OP. AMP.	+F	4 11
IC2-3 = LM4370A DUAL OTA		11 6

TRANSISTOR TYPE
TR3-5 = BC173C NPN
TR9 = P40B7 PCH.FET
ALL OTHER = BC212B-C PNP

ALL DIODES ARE FDH 999





GEM a. r.	N. 50216
SPRINTER 49B	cod. 27322

AVE. COD. 81035

ORGAN & SYNTHY PRESET
P.C. 24894 cod. 76477

ACCOMPANIMENT
P.C. 24890 cod. 76476

BUFFER & FOOTAGES SPLIT

PIANO MODULATOR

S.W. MODULATOR

SYNTHY WAH

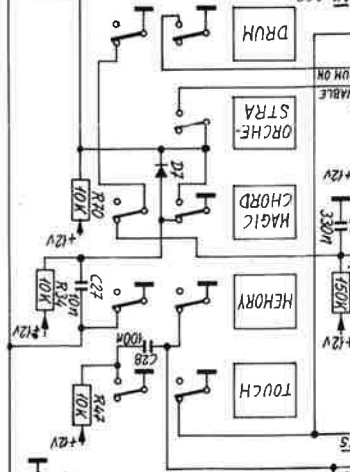
SLIDING FILTER ADJ

ENVELOPE SHAPER

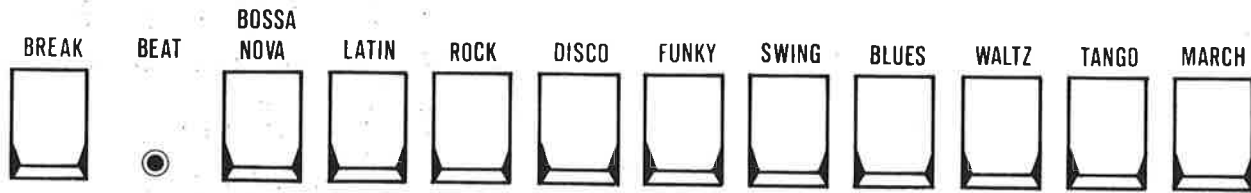
ENVELOPE SHAPER

ENVELOPE SHAPER

PERC. 4 MODULATION



MICROPRO DRUM



ENGLISH

This instrument counter-signed by a B, has a new rhythm unit called MICROPRO DRUM. The BREAK is an automatic feature which gives you a range of professional drums. To have it just push the button and BREAK will enter into function automatically at the right moment.

ITALIANO

Il Vostro strumento, contrassegnato dalla lettera B, è completato da una nuova unità ritmica denominata MICROPRO DRUM.

Il Break è una prestazione automatica che fornisce una variazione di batteria di tipo professionale. Per ottenerlo premete semplicemente il pulsante ed il Break entrerà automaticamente al momento giusto.

DEUTSCH

Ihr Instrument, mit B gekennzeichnet, hat eine neue Rhythmus Einheit, die MICROPRO DRUM genannt ist.

BREAK ist eine automatische Ausführung, die die Vielseitigkeit eines Schlagzeuges herbeiführt.

Um diese zu erreichen drücken Sie einfach den Knopf und BREAK setzt im richtigen Moment automatisch ein.

FRANCAIS

Ce modèle B comporte une nouvelle batterie électronique dénommée MICROPRO DRUM.

Le BREAK est un automatisme qui reproduit un roulement de batterie. On peut l'appeler à n'importe quel moment sur la touche BREAK. Il se placera de lui même dans le tempo.

NEDERLANDS

Dit instrument, zoals omschreven onder a B, heeft een nieuw ritme unit genaamd MICROPRO DRUM.

BREAK is een automatisch effect, dat u een aantal professionele Drumvariaties geeft. U dient enkel de knop in te drukken en de BREAK zal automatisch op het juiste moment in werking treden.